



# SPEED UP™

HIGH SPEED & FEED



## 2021 TOOLING PROMO



**ARONSON-CAMPBELL**  
INDUSTRIAL SUPPLY INC.

**SEATTLE**

1700 136th Place N.E.  
Bellevue, WA 98005  
Tel: (425) 372-2000  
Fax: (425) 372-2001  
Toll Free: (800) 562-8375

**PORTLAND**

12820 S.E. Hwy 212  
Clackamas, OR 97015  
Tel: (503) 212-5353  
Fax: (503) 212-5354  
Toll Free: (800) 922-1263

**SPOKANE**

10925 E. Montgomery, Unit A  
Spokane, WA 99206  
Tel: (509) 891-4047  
Fax: (509) 891-4051  
Toll Free: (800) 854-7601

Member IMC Group  
 **Ingersoll**  
Cutting Tools

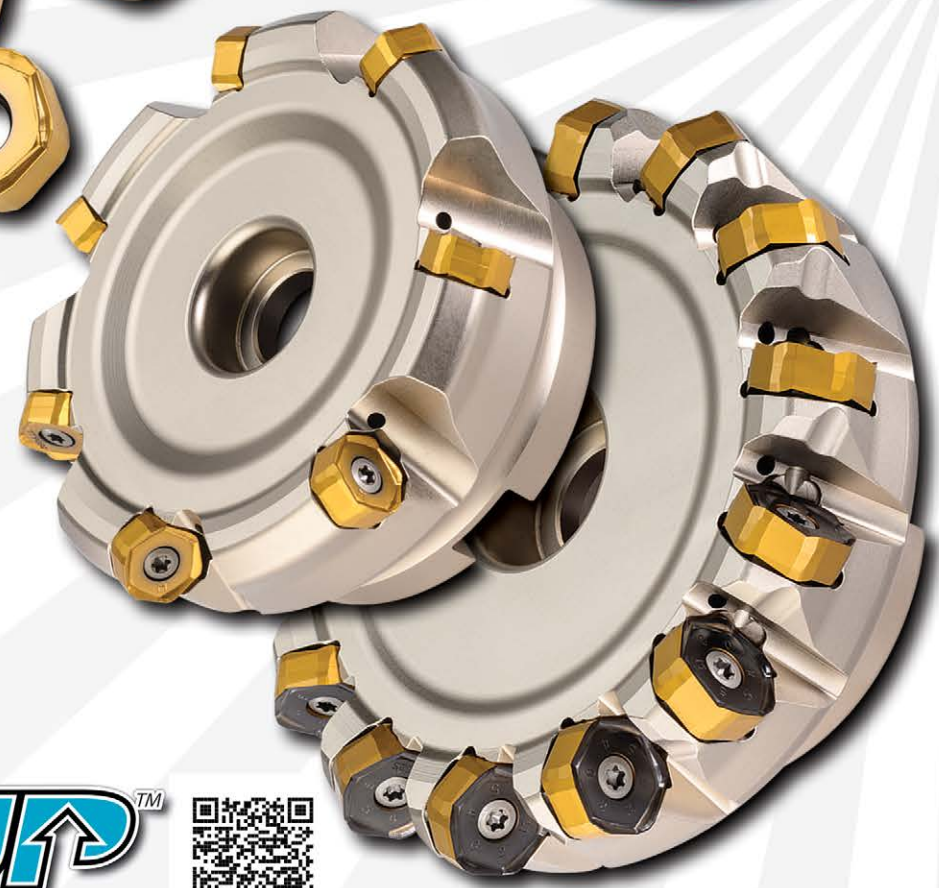
# DIPOSHEXA™

## ROBUST 45° FACE MILL WITH 12-EDGE ECONOMY

- 1.50" - 10.00" cutter diameter range
- .11" maximum depth of cut with 6mm IC insert
- .20" maximum depth of cut with 10mm IC insert
- Reinforced cutting edge boasts high feed rate potential
- High radial pocket incline promotes utmost chip evacuation and fine pitch cutter design for maximized productivity
- Helical cutting edges promote smooth machining
- Unequally spaced insert placement aids to diffuse vibration
- Integrated wiper flats produce 32-63 Ra surface finishes

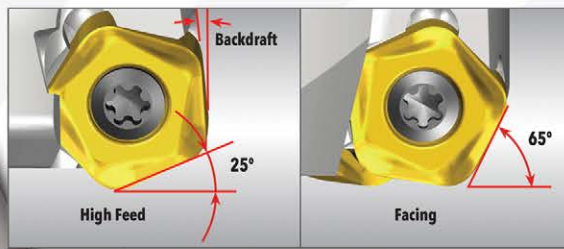
Ideal for steels and iron!

**DEAL A**  
**PURCHASE** 40 inserts  
**& RECEIVE** one  
face mill body\* at  
**50% OFF!**  
\*up to 5" diameter  
HIG-PC 101A-JUST



**SPEED UP™**  
HIGH SPEED & FEED





# DIPOSPENTA™

## HI-FEED & 65° END AND FACE MILLS WITH 10-EDGE ECONOMY!

- .750" - 4.00" cutter diameter range
- 5mm & 10mm insert IC's offer diverse DOC options
- Same insert fits Hi-Feed & 65° mills
- Reinforced cutting edge boasts high feed rate potential
- Positive geometry promotes smooth machining
- Wide market range including Die/Mold and General Purpose!

**DEAL A**  
 PURCHASE 20 inserts  
 & RECEIVE one  
 end mill body at  
**50% OFF!**  
 - PC 102A -

**DEAL B**  
 PURCHASE 40 inserts  
 & RECEIVE one  
 face mill body at  
**50% OFF!**  
 - PC 102B -



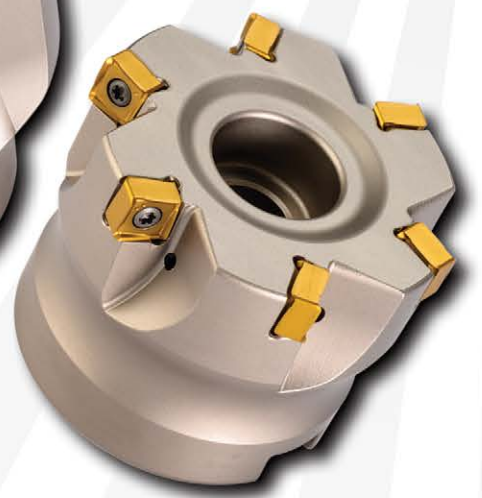
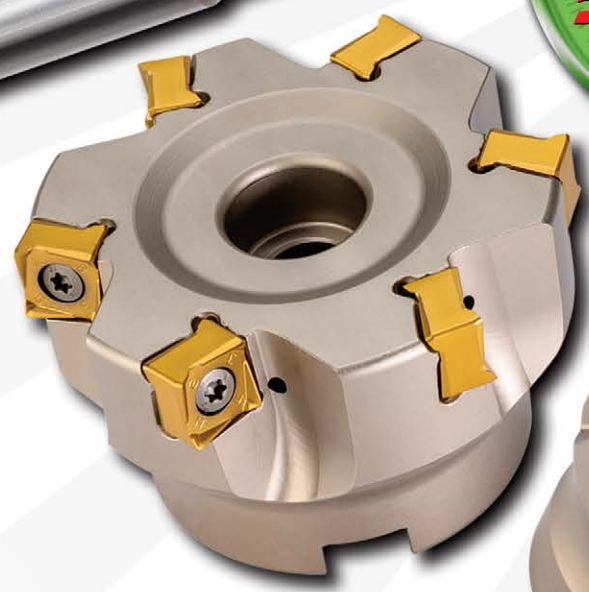
# DIPOSQUAD™

## TRUE 90° SHOULDER MILLS WITH 8-EDGE ECONOMY

- .625" - 6.00" cutter diameter range
- 7mm insert generates true 90° up to .19" depth of cut and is optimized to step down axially with minimal mismatch
- 12 mm insert generates true 90° up to .33" depth of cut
- High axial rake reduces cutting loads and promotes smooth machining
- Unequally spaced insert placement aids to diffuse vibration
- Integrated wiper flats produce 32-63 Ra surface finishes

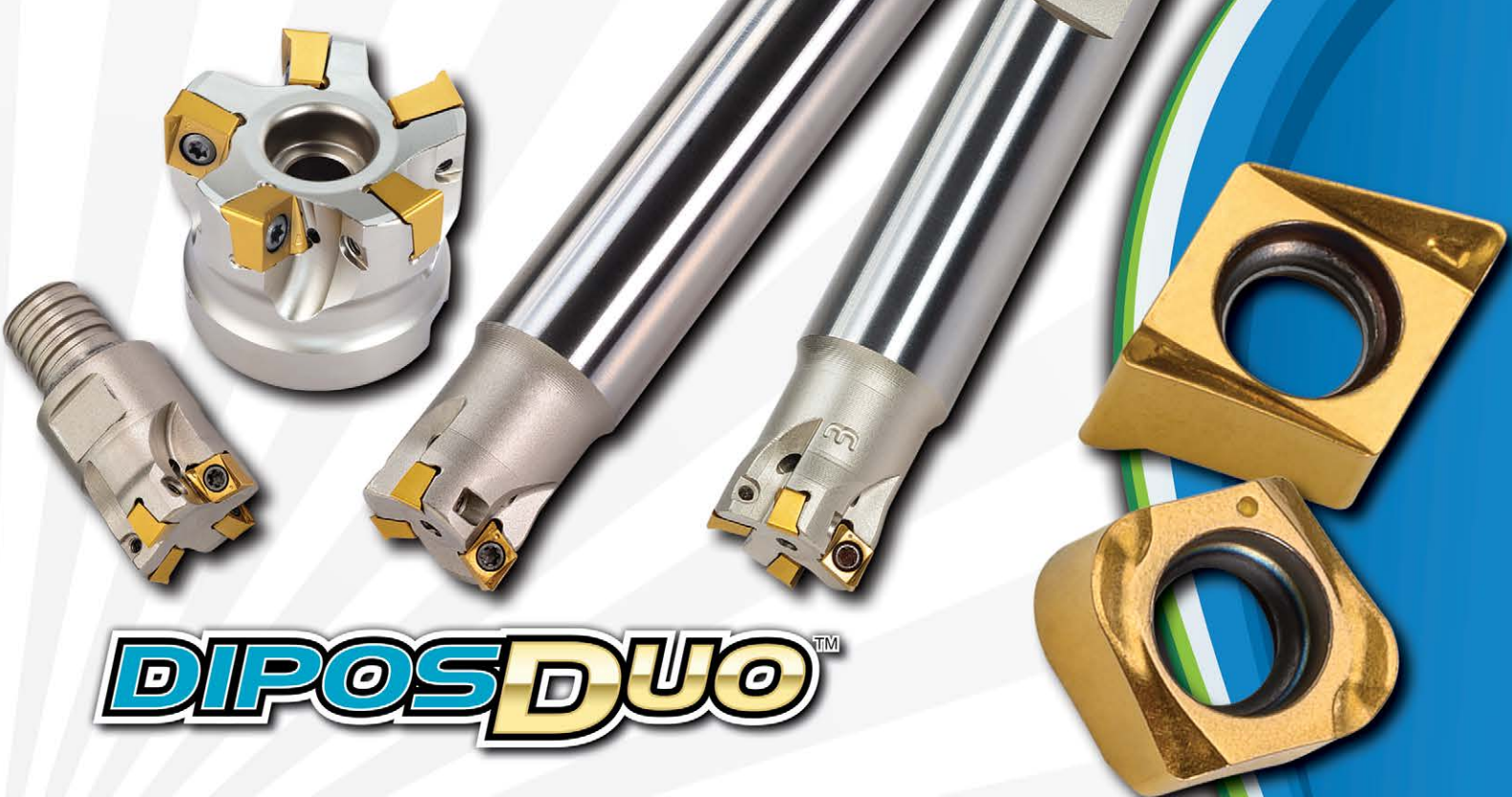
**DEAL A**  
PURCHASE 20 inserts  
& RECEIVE one  
end mill body at  
**50% OFF!**  
- PC 103A -

**DEAL B**  
PURCHASE 40 inserts  
& RECEIVE one  
face mill body\* at  
**50% OFF!**  
\*up to 5" diameter  
- PC 103B -



**SPEED UP™**  
HIGH SPEED & FEED





# DIPOS DUO™

## 90°, BACKDRAFT, HI-FEED & HI-RAMP VERSATILITY WITH 4-EDGE ECONOMY!

- .50" - 4.00" cutter diameter range
- Offered with 5 insert sizes; accomodating a wide range of diameter, density & cut options
- True 90° shoulder milling capability
- Same cutter body utilizes 90°, Backdraft & Hi-Feed inserts
- Concave face design accommodates ramping, interpolation & drill-mill functions
- Pockets designed with wide mounting area for utmost support behind the cutting edge
- Cutters plumbed with coolant through the tool
- Integrated wiper flats produce 32-63 Ra surface finishes



**DEAL A**  
PURCHASE 20 inserts  
& RECEIVE one  
end mill body at  
**50% OFF!**  
- PC 104A -  
HIGH PERFORMANCE GAUGE

**DEAL B**  
PURCHASE 40 inserts  
& RECEIVE one  
face mill body\* at  
**50% OFF!**  
- PC 104B -  
HIGH PERFORMANCE GAUGE



# HIPOSTRIO™

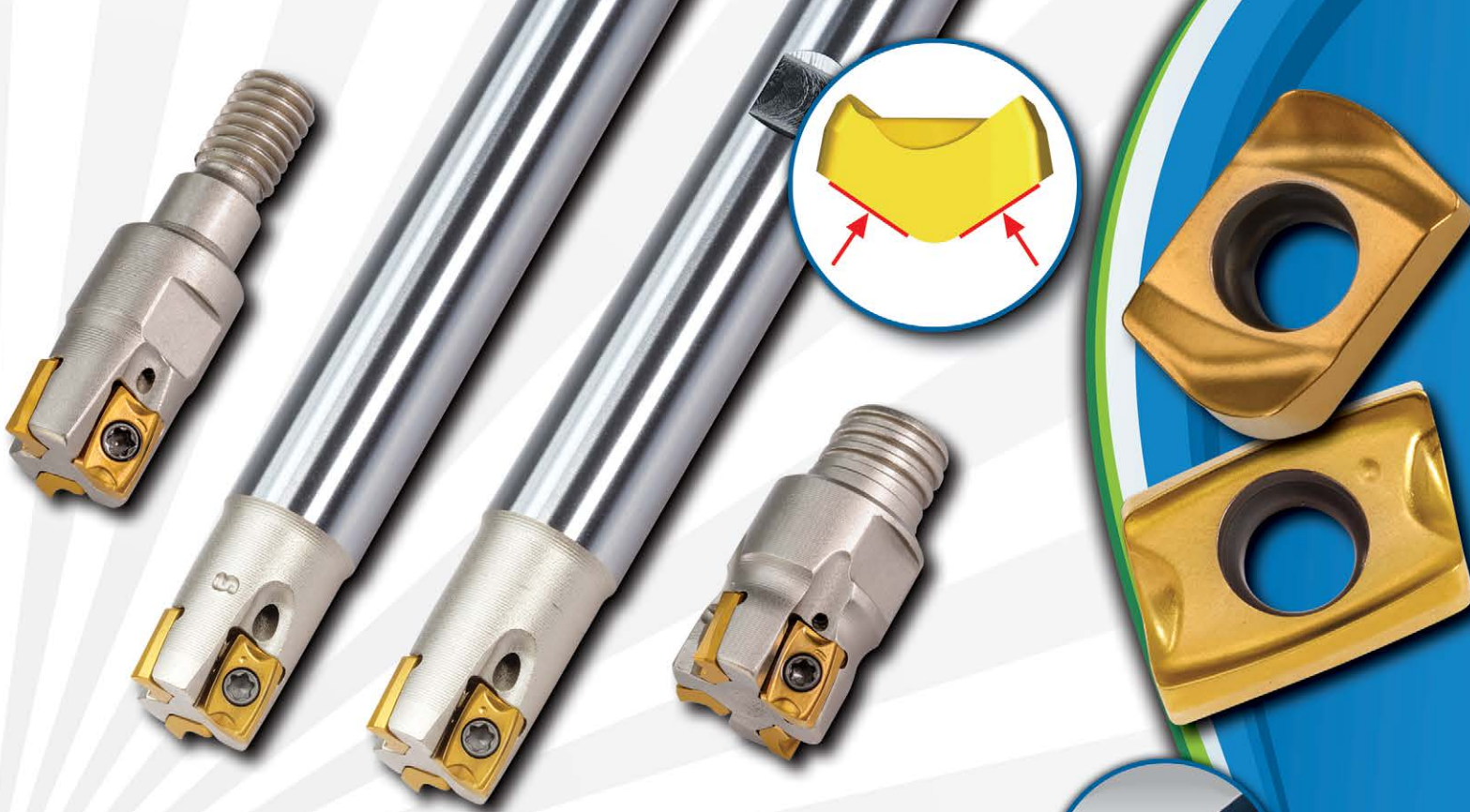
**90° SHOULDER MILL WITH 3-EDGE-ECONOMY INSERTS,  
NOW WITH "NEW" 4MM INSERT SIZE**

- New 4mm insert used in .312 – .625" diameter cutters
- High positive cutting geometry; ideal for small machines and gummy materials
- Ramping capability for cutting versatility
- Inserts with integrated wiper flats typically produce surface finishes between 32-63 Ra
- Cutters ported with coolant



**SPEED UP™**  
HIGH SPEED & FEED





# HIPOSSPEED V™

## MINI SIZED 90° SHOULDER AND HIGH-FEED MILLS WITH STRONG V-SHAPED INSERT

- .250 – .500" diameter cutter range
- V-Bottom pocket fosters easy insert indexing, increased core diameter and minimizes insert screw stress
- 90° and Hi-Feed inserts fit the same pockets
- Integrated wiper flats produce 32-63 Ra surface finishes
- All cutters are plumbed with coolant through the tool
- High cutter densities with small IC insert sizes
- Economical solid carbide alternative!

**DEAL A**  
**PURCHASE** 20 inserts  
**& RECEIVE** one  
end mill body at  
**50% OFF!**  
- PC 106A -  
HIGH PERFORMANCE CHOICE



# DIPOSFEED™

**"NEW" IC SIZES, "NEW" DIAMETER RANGES,  
"NEW" GRADE & A "NEW" NAME, DIPOSFEED!**

- Cutter body options include: End Mill, Top-On, Chip Surfer & Face Mill
- Cutter diameter range, .312 up to 4.00 inch
- Higher insert densities for super productivity!
- Depth of cut (DOC) capability from .5mm (.020) to 2mm (.078)
- Optimal insert cutting edge preparations & rake face geometries for all material groups.
- APT ranges from .008 to .160 allow for extreme productivity!
- Inserts offer 4 cutting edges for cost-effective machining and economy!
- Lower cutting forces promote efficient high-feed milling
- An expanded high-feed family under one new name, DIPOSFEED!  
(formerly, HiFeed Mini & Midi)

**DEAL A**  
**PURCHASE 20 inserts**  
**& RECEIVE one**  
**corresponding end mill**  
**body at**  
**50% OFF!**

- PC 107A -

4mm insert



6mm insert



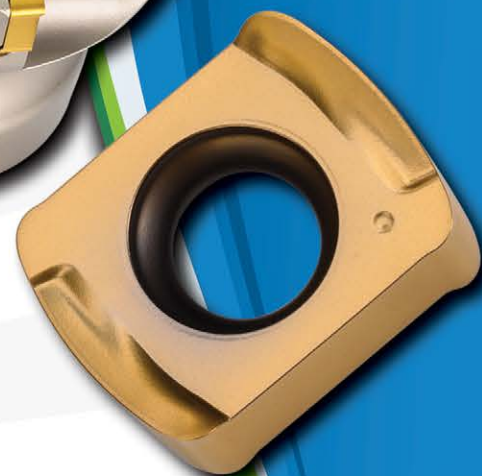
**SPEED UP™**  
HIGH SPEED & FEED







11mm insert



**DEAL B**  
**PURCHASE** 40 inserts  
**& RECEIVE** one  
 corresponding face mill  
 body at  
**50% OFF!**  
 - PC 107B -

9mm insert



# GOLD SFEED™

## THE EXPANSION OF OUR MOST POPULAR HIGH-FEED MILLING LINE TO INCLUDE TWO "NEW" PRODUCT FAMILIES

- 3 distinct insert geometries provide an optimal solution across all material classes and application types
- Ingeniously designed insert mounting for reliable and fast feed-rates
- All inserts include radial wipers for smooth profiling, shouldering and hole interpolation which can eliminate secondary operations
- End mills and face mills incorporating 5 distinct insert sizes and cutter diameters ranging from .375" - 7.000"
- GoldSFeed is the most complete and extensive High-Feed milling line in metalworking

**DEAL A**  
PURCHASE 20 inserts  
& RECEIVE one  
end mill body at  
**50% OFF!**

- PC 108A -

**DEAL B**  
PURCHASE 40 inserts  
& RECEIVE one  
face mill body at  
**50% OFF!**

- PC 108B -

**SPEED UP™**  
HIGH SPEED & FEED





# NUMAX ILOCK™

## END MILLS & SHELL MILLS WITH INTERLOCKING INSERTS FOR SMOOTH AND RELIABLE OPERATION

- Overlapping “V-Notch” inserts that allow for smooth chip formation at high feed-rates
- The patented end-station fully supports the insert for reliable operation and unobstructed chip evacuation
- Tangentially mounted inserts with dovetailed seating for greater cutter reliability and insert stability
- End-station inserts with corner radii from .031” to .250” that fit the same cutter body, no cutter modifications needed
- High axial shear for smooth chip formation in both keen and landed insert geometries

**DEAL A**

**PURCHASE** 50 inserts  
**& RECEIVE** a 2.000” dia. shell mill or end mill body for  
**\$300!**  
**(\$400 CAD)**

- PC 109A -

**DEAL B**

**PURCHASE** 70 inserts  
**& RECEIVE** a 2.500” diameter shell mill body for  
**\$400!**  
**(\$500 CAD)**

- PC 109B -

**DEAL C**

**PURCHASE** 80 inserts  
**& RECEIVE** a 3.000” diameter shell mill body for  
**\$500!**  
**(\$650 CAD)**

- PC 109C -



# GOLD TWIST™

## PREMIUM HOLE MACHINING WITH "NEW" TPC SELF-CENTERING TIPS

- Unique geometry eliminates need for a pilot hole
- Excellent surface finish, hole cylindricity and straightness
- Fully compatible with existing GoldTwist drill bodies
- Diameter range: .236" - 1.020" (D6.0-25.9mm)
- For steel and cast iron applications

### DEAL B

**PURCHASE** 6 tips &  
**RECEIVE** one drill body at

**50%**

**OFF** (up to 5 x D)

- PC 111B -

### DEAL A

**PURCHASE** 4 tips &  
**RECEIVE** one drill body at

**50%**

**OFF** (up to 3 x D)

- PC 111A -

### DEAL C

**PURCHASE** 8 tips &  
**RECEIVE** one drill body at

**50%**

**OFF** (up to 8 x D)

- PC 111C -



**SPEED UP™**  
HIGH SPEED & FEED





## **SOLID DRILL<sup>3</sup>**

**“NEW” 3-FLUTE SOLID CARBIDE DRILL FOR 50% HIGHER FEED RATES!**

- 3-flute geometry increases productivity by at least 50%
- Self-centering geometry provides precise and accurate holes
- Very high stability in the cut due to its specially designed edge geometry
- 3 coolant outlet holes to maximum flow & evacuate chips
- New PVD-coated grade IN2205, blue in color for easy identification
- 3xD and 5xD lengths
- 4mm - 12mm metric diameters; 5/32" - 15/32" diameters
- Suitable for steel and cast iron drilling



# RHINO TURN™

Featuring:

## COOLBURST™

### ECONOMICAL TURNING INSERTS NOW WITH THRU-COOLANT HOLDERS

- Pinpoint coolant delivery from top clamp (for cooling) & bottom of holder (for chip breaking)
- Industry-leading 1,000+ “economy” inserts to choose from!
- T-Type holding system with multi-directional clamping force provides 40% more stability over conventional lever lock holders, plus simple & fast indexing. No additional components required.
- Up to 50% increase in tool life under the same machining conditions
- 20% increase in cutting speed capability in difficult-to-cut materials
- Excellent chip control

#### DEAL A

**PURCHASE** 1 internal or external holder and 10 inserts **& RECEIVE** 10 additional inserts

**FREE!**

(free inserts must fit same holder)

- PC 113A -

**SPEED UP™**  
HIGH SPEED & FEED





# RHINO TURN M™

**A "NEW" DOUBLE-SIDED MINI-SIZE INSERT AND HOLDER LINE,  
AN ECONOMICAL ALTERNATIVE TO STANDARD POSITIVE  
TURNING AND BORING INSERTS**

- Double-sided miniature inserts (7mm IC)
- Optimized turning for low depths of cut (up to 2mm)
- Inserts feature the same cutting edge angle as standard positive inserts (zero degrees)
- Low cutting forces promotes very good surface finish
- Excellent chip control at lower depths of cut
- Stable screw clamping
- Suitable for general purpose machining of small parts, especially on Swiss type automatic lathes

**DEAL A**  
PURCHASE 20 inserts  
& RECEIVE one  
external holder at  
**50% OFF!**  
- PC 114A -  
HIGH PERFORMANCE GAUGE

**DEAL B**  
PURCHASE 30 inserts  
& RECEIVE one  
internal holder at  
**50% OFF!**  
- PC 114B -  
HIGH PERFORMANCE GAUGE



# SUPERTURN<sup>2</sup>™

## 4-EDGE INSERTS AND HOLDERS FOR ALL-DIRECTIONAL TURNING INCLUDING HIGH-FEED BACKWARD TURNING

- Multi-directional turning capabilities that include forward longitudinal turning, high feed backward turning, face turning, profiling and undercutting all with the same tool
- Much higher productivity due to reduced downtime, fewer tool changes and optimized tool paths
- Double-sided ZNMV inserts provide 4 cutting edges
- Insert/holder system uses the same axial & radial rake angle as comparable positive inserts, resulting in low cutting forces
- Serrated cutting edge provides excellent chip control at a variety of cutting depths
- 1.00" and 1.25" holders feature rigid T-Type clamping & optional COOLBURST internal coolant supply



**SPEED UP**™  
HIGH SPEED & FEED





# GOLD FLEX™

## GROOVING FAMILY EXPANDS WITH "NEW" 20MM INSERT AND HOLDERS FOR SWISS-TYPE AUTOMATIC LATHES

- 4-edge miniature insert for grooving, parting, turning, profiling and threading on Swiss-type lathes
- Inserts are handed so they can part or groove next to a square shoulder
- Grooving width range of .020" ~ .118" (0.5 to 3.0 mm)
- Grooving depth range of .087" ~ .197" (2.2 to 5.0 mm)
- Superior insert position repeatability and strong clamping force results in long tool life
- Holders available with or without COOLBURST high pressure internal coolant supply
- Inserts feature new PVD-coated grade TT4430 & a sharp cutting edge
- *Deals apply only to 20mm insert/holders*

**DEAL A**  
**PURCHASE** 10 inserts  
**& RECEIVE**  
 holder at  
**50% OFF!**  
 - PC 116A -

**DEAL B**  
**PURCHASE** 20 inserts  
**& RECEIVE** holder  
**FREE!**  
 - PC 116B -

**DEAL C**  
**PURCHASE** 20 inserts  
**& RECEIVE**  
 COOLBURST HP holder  
**50% OFF!**  
 - PC 116C -



# CUTSPEED™

## SINGLE-ENDED RIGID INSERTS & HOLDERS FOR PARTING AND DEEP GROOVING WITH UNIQUE ADAPTERS!

- Rigid clamping of the specialized 3-point contact area for excellent accuracy, repeatability and durability
- Insert's increased height enhances strength and prolongs tool life
- System is capable of parting off up to 120mm (4.72") work piece diameter
- High rigidity triangular blades and dedicated holders
  - Stable tool life and impressive cutting performance
  - Improved productivity due to high feed machining capability
- 1.6mm, 2mm & 3mm insert widths
- Available with internal coolant supply for longer tool life and improved chip evacuation



**SPEED UP™**  
HIGH SPEED & FEED





# Typhoon Coolant Driven Spindle

**HIGH SPEED JET SPINDLES THAT WILL REDUCE CYCLE TIMES BY AS MUCH AS 70%**

- High-speed spindles for increased rotational velocity powered by your existing machine's high pressure coolant
- Up to 1.5Kw of power and rotational velocity output of 25,000 to 45,000 RPM
- Cycle time reduction of up to 70%
- Compact Plug and Play design – fits on any ATC or tool magazine
- Ideal for a wide range of finishing and semi-finishing applications using small diameter cutting tools
- Equipped with a real-time, wireless speed display system, cutting tool rotational speed monitor, programmable spindle parameters, and warning/alarm alerts during spindle operation
- Available in: CAT V-Flange, ER32 DIN 6499, HSK-A, C-Adapter, Cylindrical Straight Shank & BT MAS-403



Member IMC Group  
**Ingersoll**  
Cutting Tools

**Marketing & Technology Center**

845 S. Lyford Road  
Rockford, IL 61108-2749 U.S.A.

Tel: 815.387.6600

Fax: 815.387.6968

Email: [info@ingersoll-imc.com](mailto:info@ingersoll-imc.com)

Internet: [www.ingersoll-imc.com](http://www.ingersoll-imc.com)

**AC** **ARONSON-CAMPBELL**  
INDUSTRIAL SUPPLY INC.

**SEATTLE**

1700 136th Place N.E.

Bellevue, WA 98005

Tel: (425) 372-2000

Fax: (425) 372-2001

Toll Free: (800) 562-8375

**PORTLAND**

12820 S.E. Hwy 212

Clackamas, OR 97015

Tel: (503) 212-5353

Fax: (503) 212-5354

Toll Free: (800) 922-1263

**SPOKANE**

10925 E. Montgomery, Unit A

Spokane, WA 99206

Tel: (509) 891-4047

Fax: (509) 891-4051

Toll Free: (800) 854-7601

**SPEED**  
HIGH SPEED & FEED  
**UP**<sup>TM</sup>

Ingersoll Cutting Tools reserves the right to limit quantities, to change the terms of the promotion without notice, and to refuse an order that does not conform with the terms and conditions contained or implied herein. Offer good until December 31st, 2021, unless otherwise noted, or while supplies last. Prices exclude applicable taxes. All promotions based on the price list in effect at the time the order is placed. Distributor orders must be drop shipped to the end-user. Limit of 5 of the same product to the same end user.