

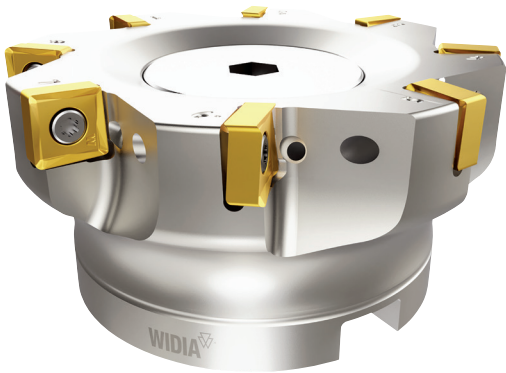


WIDIA  TM
VARIABLE
MEGA METAL
SAVINGS

***BUY MORE
INSERTS,
SAVE MORE
ON STEEL!****

*Offer valid through June 30, 2024. See inside for details.

8-Edged, Double-Sided True 90° Victory™ Shoulder-Face Mill



VSM890

- Market leading solution with double-sided, 8-edged milling inserts
- Perfect fit for all shoulder-face milling jobs where 90° wall is needed
- Superior MRR through high-performance grades and chip breakers
- Multiple diameters with course, medium and fine-pitched cutter densities
- Applicable in aluminum, steels, cast iron, titanium, stainless steels and high-temp alloys
- Comprehensive standard offering for cutter bodies and inserts to address light machining to heavy-roughing jobs

VSM890 Face & Shoulder Mill Inch (USD)							
Cutter Diameter	# of Inserts						
	Inch	10	15	20	30	40	50
1.25	\$25	\$0	\$0	\$0	\$0	\$0	\$0
	VPWMS12510	VPWMS12515	VPWMS12520	VPWMS12530	VPWMS12540	VPWMS12550	
1.5	\$50	\$25	\$0	\$0	\$0	\$0	\$0
	VPWMS15010	VPWMS15015	VPWMS15020	VPWMS15030	VPWMS15040	VPWMS15050	
2	\$75	\$25	\$0	\$0	\$0	\$0	\$0
	VPWMS210	VPWMS215	VPWMS220	VPWMS230	VPWMS240	VPWMS250	
2.5	\$100	\$50	\$0	\$0	\$0	\$0	\$0
	VPWMS25010	VPWMS25015	VPWMS25020	VPWMS25030	VPWMS25040	VPWMS25050	
3	\$125	\$75	\$25	\$0	\$0	\$0	\$0
	VPWMS310	VPWMS315	VPWMS320	VPWMS330	VPWMS340	VPWMS350	
4	\$150	\$100	\$50	\$25	\$0	\$0	\$0
	VPWMS410	VPWMS415	VPWMS420	VPWMS430	VPWMS440	VPWMS450	
5	\$200	\$150	\$75	\$25	\$0	\$0	\$0
	VPWMS510	VPWMS515	VPWMS520	VPWMS530	VPWMS540	VPWMS550	
6	\$275	\$225	\$175	\$75	\$25	\$0	\$0
	VPWMS610	VPWMS615	VPWMS620	VPWMS630	VPWMS640	VPWMS650	
8	\$300	\$250	\$175	\$100	\$50	\$0	\$0
	VPWMS810	VPWMS815	VPWMS820	VPWMS830	VPWMS840	VPWMS850	
10	\$350	\$300	\$250	\$175	\$100	\$25	\$0
	VPWMS1010	VPWMS1015	VPWMS1020	VPWMS1030	VPWMS1040	VPWMS1050	

VSM890 Face & Shoulder Mill Metric (USD)							
Cutter Diameter	# of Inserts						
	mm	10	15	20	30	40	50
32	\$25	\$0	\$0	\$0	\$0	\$0	\$0
	VPWMS32MM10	VPWMS32MM15	VPWMS32MM20	VPWMS32MM30	VPWMS32MM40	VPWMS32MM50	
40	\$50	\$25	\$0	\$0	\$0	\$0	\$0
	VPWMS40MM10	VPWMS40MM15	VPWMS40MM20	VPWMS40MM30	VPWMS40MM40	VPWMS40MM50	
50	\$75	\$25	\$0	\$0	\$0	\$0	\$0
	VPWMS50MM10	VPWMS50MM15	VPWMS50MM20	VPWMS50MM30	VPWMS50MM40	VPWMS50MM50	
63	\$100	\$50	\$0	\$0	\$0	\$0	\$0
	VPWMS63MM10	VPWMS63MM15	VPWMS63MM20	VPWMS63MM30	VPWMS63MM40	VPWMS63MM50	
80	\$125	\$75	\$25	\$0	\$0	\$0	\$0
	VPWMS80MM10	VPWMS80MM15	VPWMS80MM20	VPWMS80MM30	VPWMS80MM40	VPWMS80MM50	
100	\$150	\$100	\$50	\$25	\$0	\$0	\$0
	VPWMS100MM10	VPWMS100MM15	VPWMS100MM20	VPWMS100MM30	VPWMS100MM40	VPWMS100MM50	
125	\$200	\$150	\$75	\$25	\$0	\$0	\$0
	VPWMS125MM10	VPWMS125MM15	VPWMS125MM20	VPWMS125MM30	VPWMS125MM40	VPWMS125MM50	
160	\$275	\$225	\$175	\$75	\$25	\$0	\$0
	VPWMS160MM10	VPWMS160MM15	VPWMS160MM20	VPWMS160MM30	VPWMS160MM40	VPWMS160MM50	
200	\$300	\$250	\$175	\$100	\$50	\$0	\$0
	VPWMS200MM10	VPWMS200MM15	VPWMS200MM20	VPWMS200MM30	VPWMS200MM40	VPWMS200MM50	
250	\$350	\$300	\$250	\$175	\$100	\$25	\$0
	VPWMS250MM10	VPWMS250MM15	VPWMS250MM20	VPWMS250MM30	VPWMS250MM40	VPWMS250MM50	

Versatile Industry Leading Face Mill for All Machining Conditions



M1600

- 16 cutting edges for low cost per edge for machining in steels, stainless steels and cast-iron components
- Universal -MM geometry insert in grades WP35CM, WU20PM, WK15CM with low cutting forces due to positive rake
- 44° cutter lead angle allows high feed chip thinning with low power requirements
- Depth of cut: 4mm Ap1 max for aggressive MRR
- Precision ground inserts account for less run out and longer lasting tool life
- Smart insert design resists shock loads with integrated wiper facet for improved surface finish

M1600 Face Mill Inch (USD)							
# of Inserts							
Cutter Diameter	Inch	10	15	20	30	40	50
	2		\$75	\$25	\$0	\$0	\$0
		VPWMS210	VPWMS215	VPWMS220	VPWMS230	VPWMS240	VPWMS250
2.5		\$100	\$50	\$0	\$0	\$0	\$0
		VPWMS25010	VPWMS25015	VPWMS25020	VPWMS25030	VPWMS25040	VPWMS25050
3		\$125	\$75	\$25	\$0	\$0	\$0
		VPWMS310	VPWMS315	VPWMS320	VPWMS330	VPWMS340	VPWMS350
4		\$150	\$100	\$50	\$25	\$0	\$0
		VPWMS410	VPWMS415	VPWMS420	VPWMS430	VPWMS440	VPWMS450
5		\$200	\$150	\$75	\$25	\$0	\$0
		VPWMS510	VPWMS515	VPWMS520	VPWMS530	VPWMS540	VPWMS550
6		\$275	\$225	\$175	\$75	\$25	\$0
		VPWMS610	VPWMS615	VPWMS620	VPWMS630	VPWMS640	VPWMS650

M1600 Face Mill Metric (USD)							
# of Inserts							
Cutter Diameter	mm	10	15	20	30	40	50
	50		\$75	\$25	\$0	\$0	\$0
		VPWMS50MM10	VPWMS50MM15	VPWMS50MM20	VPWMS50MM30	VPWMS50MM40	VPWMS50MM50
63		\$100	\$50	\$0	\$0	\$0	\$0
		VPWMS63MM10	VPWMS63MM15	VPWMS63MM20	VPWMS63MM30	VPWMS63MM40	VPWMS63MM50
80		\$125	\$75	\$25	\$0	\$0	\$0
		VPWMS80MM10	VPWMS80MM15	VPWMS80MM20	VPWMS80MM30	VPWMS80MM40	VPWMS80MM50
100		\$150	\$100	\$50	\$25	\$0	\$0
		VPWMS100MM10	VPWMS100MM15	VPWMS100MM20	VPWMS100MM30	VPWMS100MM40	VPWMS100MM50
125		\$200	\$150	\$75	\$25	\$0	\$0
		VPWMS125MM10	VPWMS125MM15	VPWMS125MM20	VPWMS125MM30	VPWMS125MM40	VPWMS125MM50
160		\$275	\$225	\$175	\$75	\$25	\$0
		VPWMS160MM10	VPWMS160MM15	VPWMS160MM20	VPWMS160MM30	VPWMS160MM40	VPWMS160MM50

Choose and share your code when placing a new order. Promotion valid in the United States, Canada and Mexico from March 1-June 30, 2024. Free tooling is limited to steel with no additional discounts on carbide and this offer cannot be combined with other promotions, specials or discounts. Offer applies to qualified, standard catalog products only. Purchased and free items must be on the same order number. All orders must be for immediate shipment. All transactions are final. No returns are permitted other than for defective product. Program is void where prohibited by law. All local, state and federal laws apply. WIDIA reserves the right to alter or cancel this promotion at any time.



WIDIA will donate a portion of each promotional sale to the American Precision Museum

The American Precision Museum's collections and programs explore industrial history in the context of innovation, creative problem-solving and the impact of precision manufacturing on American history and culture. To learn more, visit americanprecision.org.

WIDIA  **DISTRIBUTOR**
widia.com



SEATTLE
1700 136th Place N.E.
Bellevue, WA 98005
Tel: (425) 372-2000
Fax: (425) 372-2001
Toll Free: (800) 562-8375

PORTLAND
12820 S.E. Hwy 212
Clackamas, OR 97015
Tel: (503) 212-5353
Fax: (503) 212-5354
Toll Free: (800) 922-1263

SPOKANE - BOISE
10925 E. Montgomery, Unit A
Spokane, WA 99206
Tel: (509) 891-4047
Fax: (509) 891-4051
Toll Free: (800) 854-7601

www.aronson-campbell.com