



Promo Code:  
**SUM24**

Promo Valid Through:  
**12/31/2024**

# SUMITOMO MILLING PROMO!

Purchase 10 Inserts per Pocket  
Receive a Milling Body

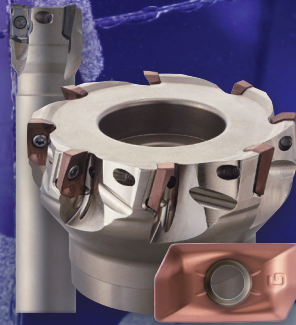
## FREE OF CHARGE!

### DMS



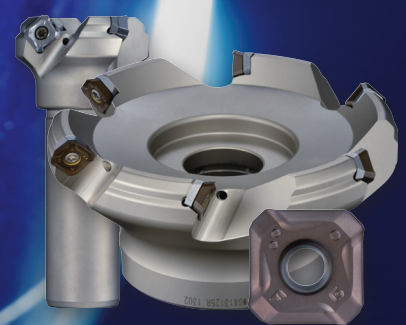
High-Feed  
Milling Series

### WEZ



90° Shoulder  
Milling Series

### WGX



45° Face  
Milling Series



**SEATTLE**  
1700 136th Place N.E.  
Bellevue, WA 98005  
Tel: (425) 372-2000  
Fax: (425) 372-2001  
Toll Free: (800) 562-8375

**PORTLAND**  
12820 S.E. Hwy 212  
Clackamas, OR 97015  
Tel: (503) 212-5353  
Fax: (503) 212-5354  
Toll Free: (800) 922-1263

**SPOKANE - BOISE**  
10925 E. Montgomery, Unit A  
Spokane, WA 99206  
Tel: (509) 891-4047  
Fax: (509) 891-4051  
Toll Free: (800) 854-7601

[www.aronson-campbell.com](http://www.aronson-campbell.com)

SUMITOMO  
ELECTRIC  
GROUP





Promo Code:  
**SUM24**

Purchase 10 Inserts per Pocket  
Receive a Milling Body  
**FREE OF CHARGE!**



## DMS: High-Feed Milling Series

### ■ Features

- Feed rate up to 0.138" from DMSW / DMSL inserts' compound arc-shaped cutting edge
- Reduced cutting forces due to a large lead angle that promotes stable machining in long projection applications



## WEZ: 90° Shoulder Milling Series

### ■ Features

- Excellent machining quality due to optimized cutting edge design and high-precision molding technology result in superb wall surface accuracy and surface finish quality
- Supports a wide range of machining applications, including face milling, shoulder milling, side milling, slot milling, ramping, helical milling and plunging. Diameters for inch bodies include .500" - 6.000"



## WGX: 45° Face Milling Series

### ■ Features

- High-rake chipbreaker design achieves low cutting force and improved runout precision. The unique wiper flat shape ensures excellent surface finish quality
- FG chipbreaker features an additional edge chamfer designed to reduce burrs and edge chipping

Learn more on our webpages:

**DMS**



**WEZ**



**WGX**



**Promo**



Promo Valid Through:

**12/31/2024**

©Copyright 2024. Sumitomo Electric Carbide, Inc. Distributor must drop ship to customer all orders for this promotion. Distribution may not place blanket orders. Distribution must place a separate promotional purchase order to receive promotion pricing. Orders can not be placed using EDI or Ecommerce site. Returns or cancellation will not be accepted on promotional purchase orders. Orders cannot be combined with competitive quoted pricing or other promotions or quotes. This promotion supersedes any other promotion, and may be withdrawn and/or cancelled at any time, without notice by Sumitomo. In the event of cancellation, all open or pending orders may be cancelled, without notice and Sumitomo may either cancel or offer credit for such orders, to be determined at the sole discretion of Sumitomo. Sumitomo assumes no liabilities incurred against advised or estimated deliveries of products or normal product warranties. Sumitomo will, at its sole discretion, offer credit or replacement for defective product, and will not be held liable for proper or improper use of such products. This offer applies only to US & Canada.