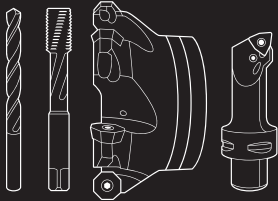


2024 Promotion

Free drill body with insert purchase, details below



Perfect performance and precision

D4120

PROGRAM BENEFITS

- High precision in hole diameter with precise balancing of the cutting forces between the center and outer insert
- Separate insert seat sizes provide the ability to optimize center and periphery inserts for high volume production
- Excellent surface quality due to wiper cutting edge
- Hardened and polished flutes for easy chip evacuation and process reliability
- Low cutting tool material costs due to four cutting edges
- Measuring collar for easy cutting diameter identification (even when assembled in the adapter)

Powered by
Tiger-tec[®]Silver
Tiger-tec[®]Gold

Center inserts

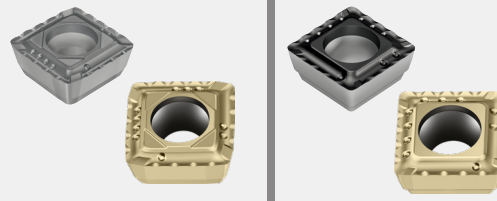
Outer inserts



A57 – The strong geometry



E57 – The universal geometry



E67 – The sharp geometry



Promotion Details

Buy any 30 inserts of P484* style (for center or outer position or as combination) and get the tool for free. Promotion runs from September 15th, 2024 to December 27th, 2024.

Use promo code **DRILLING2024**

Official Strategic Walter Partner



SEATTLE
1700 136th Place N.E.
Bellevue, WA 98005
Tel: (425) 372-2000
Fax: (425) 372-2001
Toll Free: (800) 562-8375

PORTLAND
12820 S.E. Hwy 212
Clackamas, OR 97015
Tel: (503) 212-5353
Fax: (503) 212-5354
Toll Free: (800) 922-1263

SPOKANE - BOISE
10925 E. Montgomery, Unit A
Spokane, WA 99206
Tel: (509) 891-4047
Fax: (509) 891-4051
Toll Free: (800) 854-7601

www.aronson-campbell.com

Designation key for Walter drilling tools with indexable inserts

D	4	1	20	-	03	-	13.50	F20	-	P41
1	2	3	4	5	6		7	8		9

1	2	3	4	5	6	7	8	9
Tool group	Generation	Tool type	Tool type	Unit of Measure	Drilling depth	Cutting diameter/ clamping diameter	Shank type and size, cylindrical	Insert size
D Drilling		1 Cylindrical drill 2 Chamfer drills	20 Indexable insert drill with square indexable insert 40 Indexable insert drill with P600x exchangeable insert	- Metric . Inch	02 2 × D _c 03 3 × D _c 04 4 × D _c 05 5 × D _c		F20 20 mm F25 25 mm F32 32 mm F40 40 mm F19 0.750 inch F26 1.000 inch F31 1.250 inch F38 1.500 inch F51 2.000 inch	 P41 P484 Size 1 . . . P48 P484 Size 8
							A=Cylindrical shank	
							F=Cylindrical shank with flat	
							* shank sizes shown for example only	

Product range overview of indexable insert drills

Drilling depth	2 × D _c	3 × D _c	4 × D _c	5 × D _c
Designation	D4120	D4120	D4120	D4120
Dia. range [mm]	13.5-59	13.5-59	16.5-59	16.5-59
Dia. range [in]	0.531-2.250	0.531-2.250	0.656-2.250	0.656-2.250

Indexable inserts

Designation	Insert sizes	P		M		K		N		S		Stability of machine, workpiece and clamping arrangement
		WKP25S	WKP35S	WSP45	WSP45G	WXP40	WAK15	WKP25S	WKP35S	WXP40	WSP45	
P4840P-.R-A57	1-8	☺	☺	☺	☺	☺	☺	☺	☺	☺	☺	☺ Very good ☺ Good ☺ Moderate
P4840P-.R-E57	1-8	☺	☺	☺	☺	☺	☺	☺	☺	☺	☺	
P4840P-.R-E67	1-8	☺	☺	☺	☺	☺	☺	☺	☺	☺	☺	
P4841P-.R-A57	1-8	☺	☺	☺	☺	☺	☺	☺	☺	☺	☺	
P4841P-.R-E57	1-8	☺	☺	☺	☺	☺	☺	☺	☺	☺	☺	
P4840C-.R-E67	1-8	☺	☺	☺	☺	☺	☺	☺	☺	☺	☺	
P4841C-.R-A57	1-8	☺	☺	☺	☺	☺	☺	☺	☺	☺	☺	
P4841C-.R-E57	1-8	☺	☺	☺	☺	☺	☺	☺	☺	☺	☺	

P4840. = Ground Insert
 P4841. = Pressed Insert
 P484.C = Center (Inner) Insert
 P484.P = Periphery (Outer) Insert
 A57, E57, E67 are different chip breaker geometries.
 Some geometry and grade combinations not available in all sizes

HC = Coated carbide

Walter Technical Compendium



Follow link for technical information on grades and chip breaker geometries