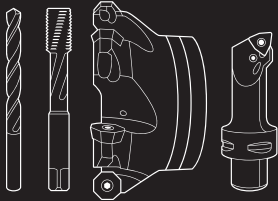


2024 Promotion

Free drill body with insert purchase, details below



Incomparably tough in all working conditions

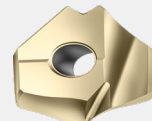
D4140

PROGRAM BENEFITS

- Maximum process reliability and tool life with coolant applied directly at the cutting edge
- Performance close to solid carbide drills with ground and polished flutes
 - Efficient and reliable chip evacuation due to polished flutes
 - Long tool life for the drill body due to reduced friction at the hardened and polished flute surface
- Simple indexable insert selection with Color Select

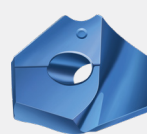


P6006



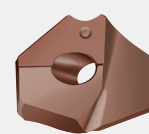
WPP25 specialist for low carbon steels (ISO P)

P6001



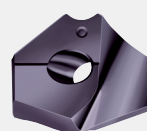
WPP45C ideal for steels (ISO P)

P6005



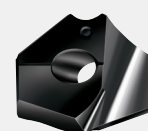
WKK45C ideal for cast irons (ISO K)

P6003



WMP35 ideal for stainless and super alloys (ISO M and ISO S)

P6004



WNN25 ideal for non-ferrous materials (ISO N)

Promotion Details

Purchase 5 exchangeable tips and get the tool for free. Inserts can be of any grade and geometry but all 5 inserts must fit the tool that you receive for free. Promotion runs from September 15th, 2024 to December 27th, 2024.

Use promo code **DRILLING2024**

Official Strategic Walter Partner



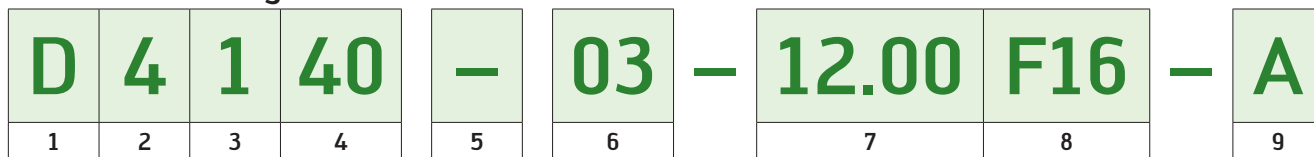
SEATTLE
1700 136th Place N.E.
Bellevue, WA 98005
Tel: (425) 372-2000
Fax: (425) 372-2001
Toll Free: (800) 562-8375

PORTLAND
12820 S.E. Hwy 212
Clackamas, OR 97015
Tel: (503) 212-5353
Fax: (503) 212-5354
Toll Free: (800) 922-1263

SPOKANE - BOISE
10925 E. Montgomery, Unit A
Spokane, WA 99206
Tel: (509) 891-4047
Fax: (509) 891-4051
Toll Free: (800) 854-7601

www.aronson-campbell.com

Designation key for Walter drilling tools with indexable inserts



1	2	3	4	5	6	7	8	9			
Tool group	Generation	Tool type	Tool type	Unit of Measure	Drilling depth	Cutting diameter/ clamping diameter	Shank type and size, cylindrical	Insert size/ interface size**			
D Drilling		1 Cylindrical drill 2 Chamfer drills	20 Indexable insert drill with square indexable insert 40 Indexable insert drill with P600x exchangeable insert	- Metric . Inch	01 $1.3 \times D_c$		F16 16 mm F20 20 mm F25 25 mm F32 32 mm F40 40 mm A12 12 mm A16 16 mm A20 20 mm A25 25 mm A13 0.500 inch A15 0.625 inch A19 0.750 inch A26 1.000 inch T14 T18 T14, T18, T22, T28 are Walter ScrewFit connections T22 T28	Seat size d_1 [in] s [in] A 0.118 0.142 B 0.118 0.157 C 0.157 0.177 D 0.157 0.197 E 0.197 0.217 F 0.197 0.236 G 0.197 0.256 H 0.236 0.280 J 0.236 0.303 K 0.236 0.315 M 0.236 0.327 N 0.236 0.339 P 0.236 0.350			
					02 $2 \times D_c / 2.5 \times D_c$				03 $3 \times D_c$	04 $4 \times D_c$	05 $5 \times D_c$

Product range overview of exchangeable-tip drills insert drills

Drilling depth	$2.5 \times D_c$	$1.3 \times D_c$	$3 \times D_c$	$5 \times D_c$	$7 \times D_c$	$10 \times D_c$
Designation	D4240-02	D4140-01	D4140	D4140	D4140	D4140
Dia. range [mm]	12-29	12-25.99	12-37.99	12-37.99	12-37.99	18-24.99
Dia. range [in]	0.472-1.023	0.472-1.023	0.472-1.496	0.472-1.496	0.472-1.496	0.472-1.00

A=Cylindrical shank
F=Cylindrical shank with flat
* shank sizes shown for example only

Drill inserts

Designation	Insert size mm	Insert size in	Seat size**	P	M	K	N	S	Stability of machine, workpiece and clamping arrangement		
				HC	HC	HC	HC	HC			
P6001-D..	12-37.99	0.472-1.496	A-P	WPP25	WPP45C	WMP35	WMP35	WKK45C	WNN25	WMP35	
P6003-D..	12-37.99	0.472-1.496	A-P								
P6004-D..	12-31.5	0.472-1.24	A-K								
P6005-D..	12-37.99	0.472-1.496	A-P								
P6006-D..	12-29.5	0.472-1.161	A-J								

** For insert diameters and seat sizes please reference Walter Catalog

HC = Coated carbide

Walter Technical Compendium



Follow link for technical information on grades and chip breaker geometries